

## COMPANY PROFILE

Manufacturer of secondary steel structures

Manufacturer of cold-formed thin-walled steel sections

# LEADING CZECH MANUFACTURER OF STEEL COLD-FORMED, THIN-WALLED SECTIONS

**voestalpine Profilform s.r.o.**



Voestalpine Profilform s.r.o. was established in 1996 as a subsidiary of voestalpine Krems GmbH in reaction of the Austrian Voestalpine Concern to the increasing demand for thin-walled steel sections in Central and Eastern Europe.

Today, voestalpine Profilform s.r.o. is part of the Metal Forming Division within the voestalpine Concern based in Krems, Austria.

The company's production plant is located in the industrial zone of Vyškov, 40 km from the city of Brno. On an area of about 7,700 m<sup>2</sup>, it produces annually about 15,000 tons of steel sections designed for various applications predominantly in the building industry but also in the mechanical engineering and automotive industries.

The voestalpine Profilform products can be found not only in the Czech Republic, but also in many other European countries, the Russian Federation, Kazakhstan and some African countries.







Highly qualified employees and advanced production technologies guarantee the production of high quality sections.

Modern and flexible production facilities allow for rapid implementation of purchase orders to meet the required delivery terms.

Production, however, is not all we do. Our main priorities include superior services: consulting, technical and software support, and logistics.





# SECONDARY STEEL STRUCTURES

## BEFORE WE START MANUFACTURING

We are interested in the customer projects: whether a 10,000 m<sup>2</sup> hall or a small shelter – we treat all projects with the same meticulousness. Together with the customer, we search for the optimal solution for an efficient and smooth implementation. We provide technical service and support in all project phases: structural design utilising our systems, production documentation and erection on site. Our services include Profilform DESIGNER software, which is free for all our partners. A satisfied customer is always our ultimate goal.

## PRODUCTION IS NOT ALL WE DO

Transport of our products to the customer's location is a matter of course. We can offer technical and consultancy support during the installation of our systems. All our products are bearers of corresponding certificates; we provide standard warranty and post-warranty service.



# SOPHISTICATED MANUFACTURING PROCESS AND SUPERIOR SERVICE

## SOFTWARE SUPPORT

The Profilform DESIGNER software assists in structural designing of your projects made of our systems, according to EN standards.

## PRODUCTION DOCUMENTATION

The production documentation can easily be developed in our ProfilCAM software, or in commonly used Advance Steel or TEKLA STRUCTURES 3D systems that feature utilities supporting our systems. Our technical support can be taken for granted.

## INTELLIGENT Z AND C SECTIONS

are of low weight while maintaining good strength characteristics for efficient and economical arrangements of purlins, side rails and floor beams.

## EN 1090 CERTIFICATION

Our structural components are manufactured in accordance with EN 1090 and are accompanied with our CE Declaration of Conformity.

## QUALITY MATERIALS FOR PRODUCTION

Sections are made of steel with a guaranteed yield strength of 450 MPa and zinc-coated on both sides with a minimum coating weight of 350 g/m<sup>2</sup>. Double-sided coating of 600/800/1000 g/m<sup>2</sup> can be applied upon request.

## MODERN PRODUCTION TECHNOLOGY

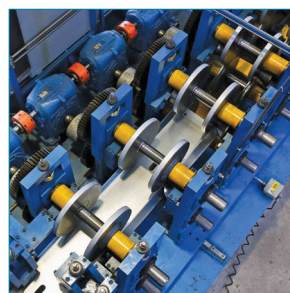
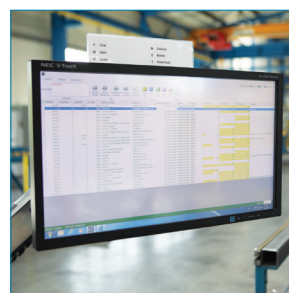
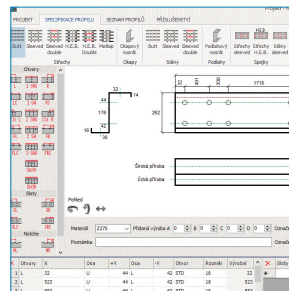
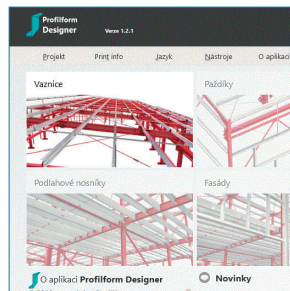
The entire production process is largely automated with very limited impact of the human factor.

## FLEXIBLE PRODUCTION CAPACITIES

allow us to provide just-in-time deliveries to meet customer requirements and strict project deadlines.

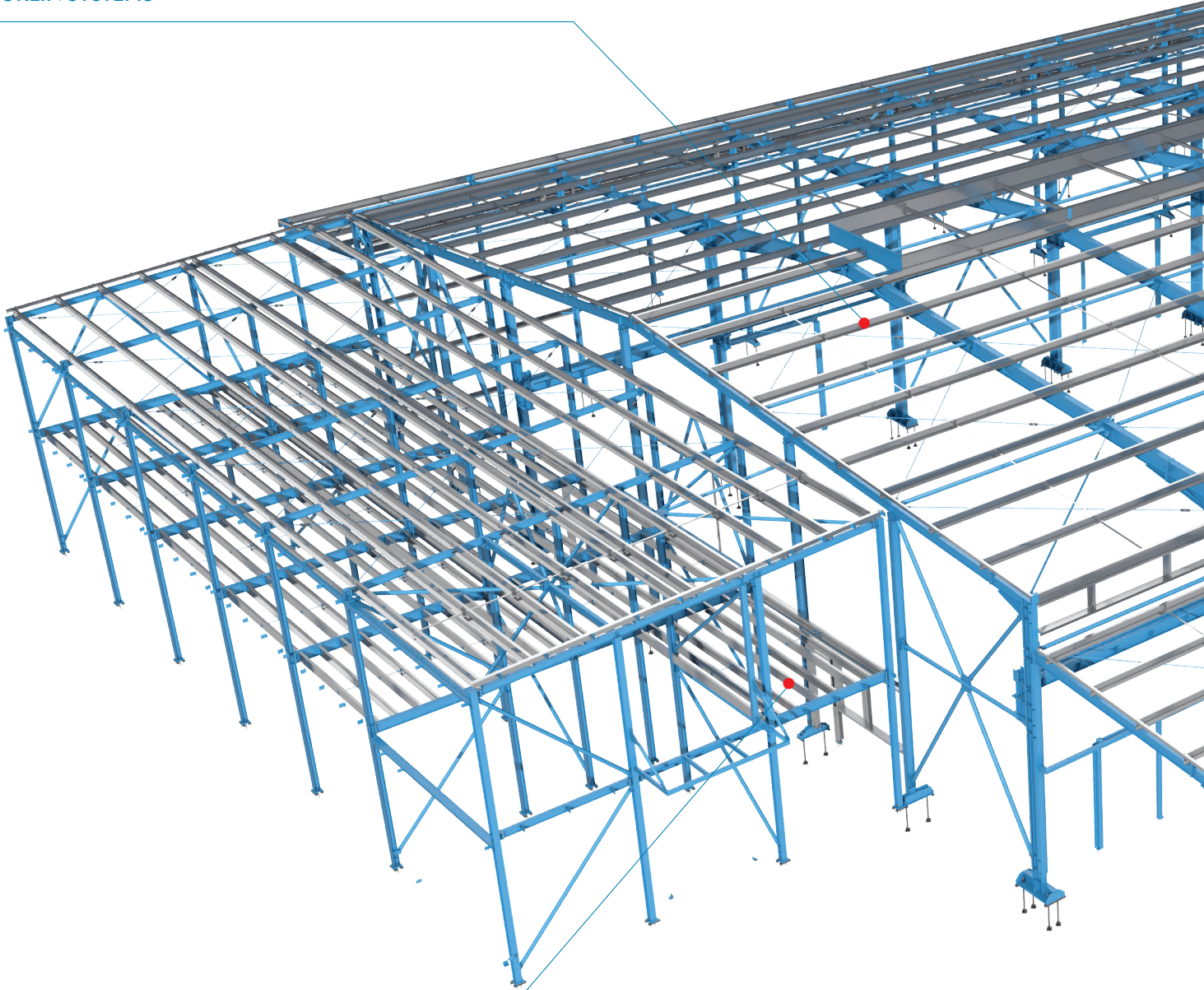
## TRANSPORT, LOGISTICS

We deliver our products safely and reliably to any location not only in the Czech Republic, but all over Europe and beyond if needed.



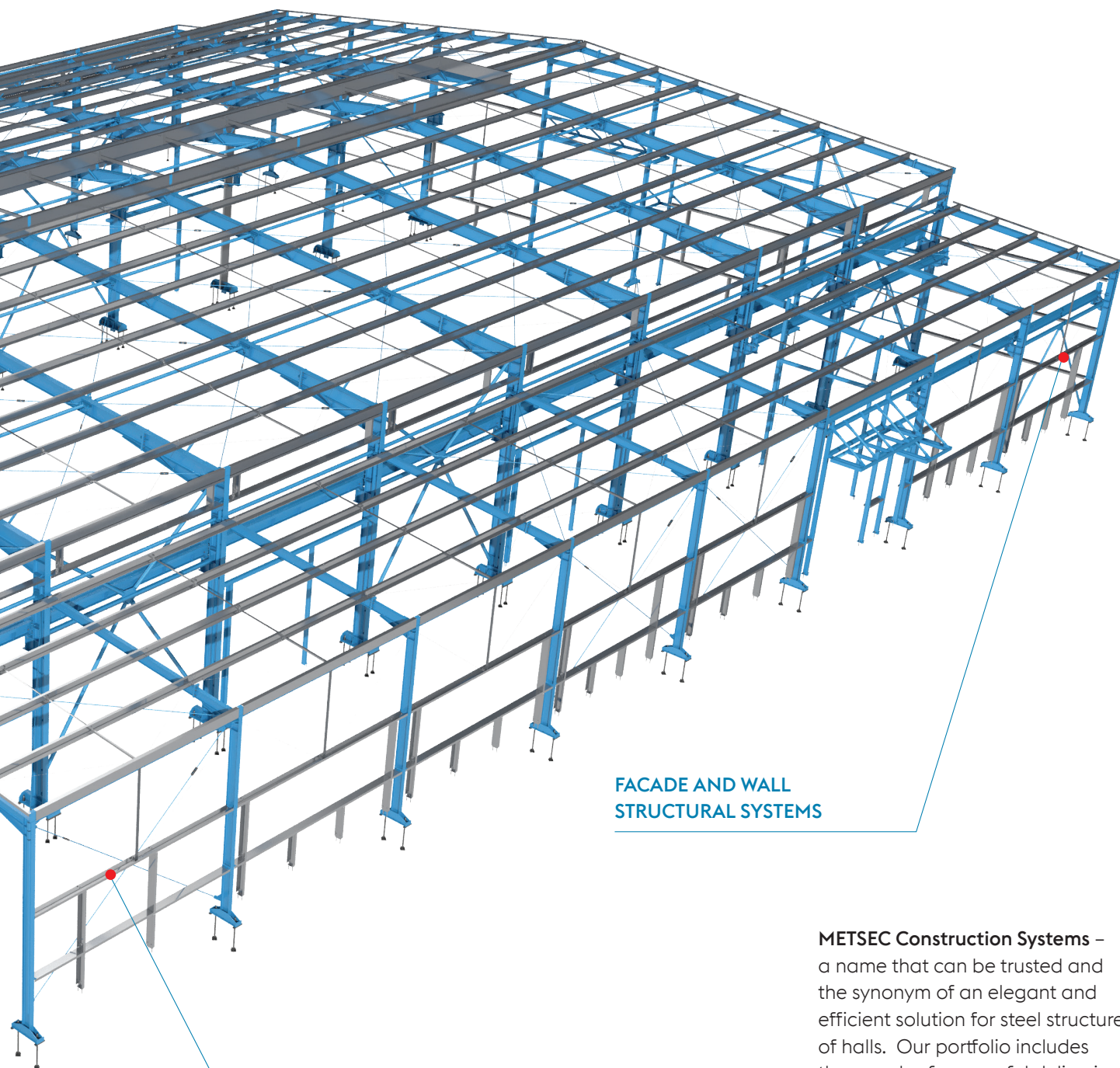
# COMPREHENSIVE HALL SYSTEM UTILISING SECONDARY STEEL STRUCTURES

## PURLIN SYSTEMS



## FLOOR BEAM SYSTEMS





**SIDE RAIL SYSTEMS**

**FACADE AND WALL  
STRUCTURAL SYSTEMS**

**METSEC Construction Systems** – a name that can be trusted and the synonym of an elegant and efficient solution for steel structures of halls. Our portfolio includes thousands of successful deliveries of purlin and side-rail systems for halls of various purposes ranging from a few hundred square metres to huge logistics, manufacturing and shopping centres.

### 1) ROOF PURLIN SYSTEMS

METSEC roof purlins capable of spanning up to 13 m. Designed in four basic structural systems depending on the span and the load. Easy design according to EN standards using Profilform DESIGNER software. Purlins are manufactured of Z-shaped sections.

### 2) FLOOR BEAM SYSTEMS

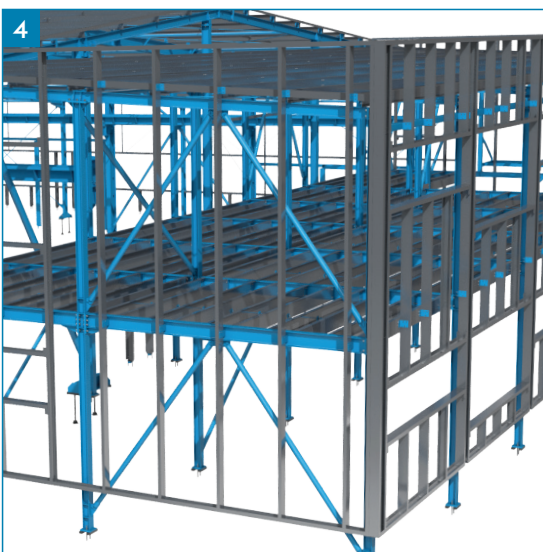
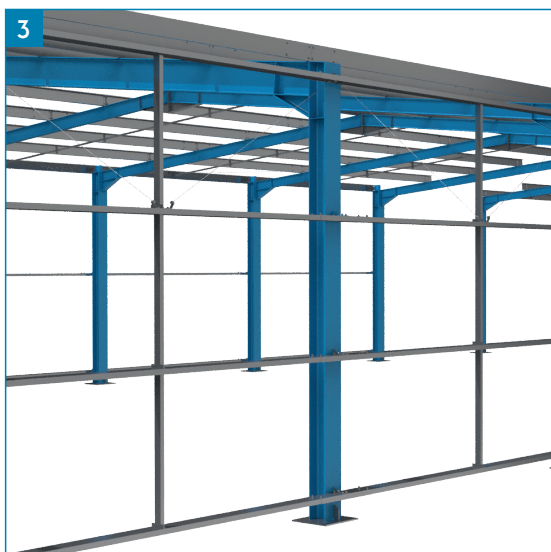
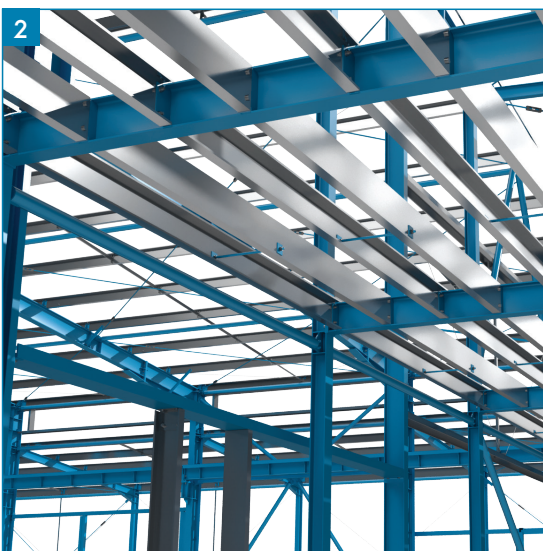
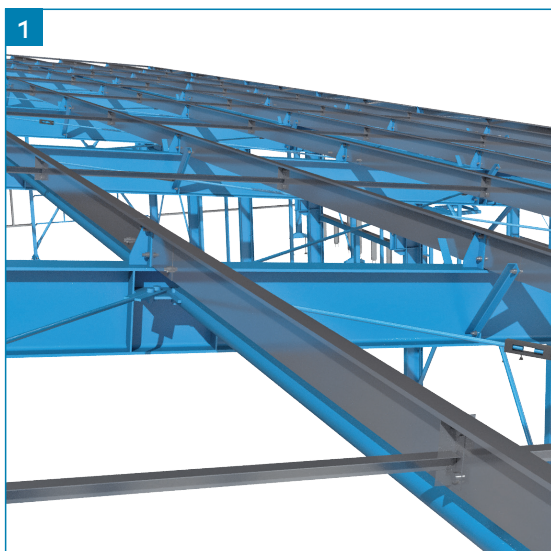
METSEC floor beams are manufactured of C-shaped sections and provide for spanning up to 7 m depending on the load. Easy design according to EN standards using Profilform DESIGNER software.

### 3) SIDE RAIL SYSTEMS

Side rails are capable of spanning up to 13 m. They are designed in two basic structural systems depending on the span and the load. Easy designing according to EN standards using Profilform DESIGNER software. Side rails are manufactured as Z- and C-shaped sections.

### 4) FACADE AND WALL STRUCTURAL SYSTEMS

These systems are a lightweight and versatile solution for a variety of building applications – from cladding panels and partitions to main constructions of single- or double-storey buildings. System components are made of C and U-shaped sections.

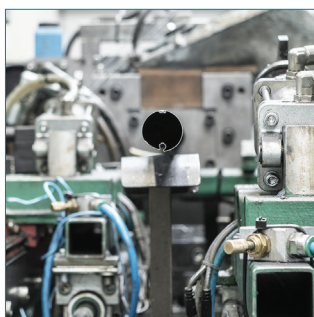
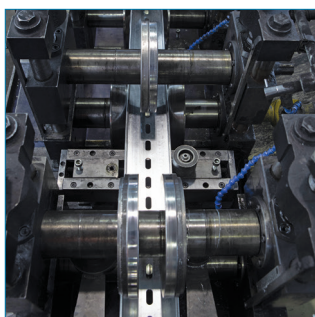








# THIN-WALLED STEEL SECTIONS

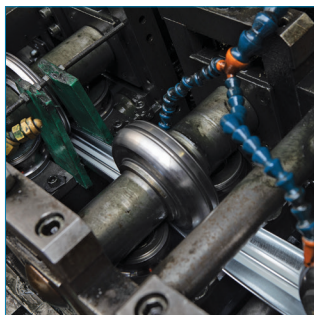


## SECTIONS OF VARIOUS SHAPES

We offer a wide range of sections of various shapes, sizes and thicknesses.

## QUALITY RAW MATERIALS

Sections are made of high-quality structural steels in non-pickled or pickled versions. Galvanised sections can be supplied with galvanised edges and a coating thickness of up to 1,000 g/m<sup>2</sup>.



## COPRA RF SOFTWARE

The precise section design is achieved among other things by the sophisticated Copra RF software for designing forming tools and procedures.

## MODERN PRODUCTION TECHNOLOGIES

We manufacture sections on modern profiling lines with precise splitting and pre-punching on integrated presses.



### 1) STANDARD SECTIONS

Our portfolio is based on thin-walled U, L and C sections. They are made of hot rolled structural steels – pickled and non-pickled, and of non-pickled galvanised steels. They are used in various applications in civil and mechanical engineering and logistics including auxiliary steel structures, manufacturing of containers, superstructures, belt conveyors, HVAC systems, storage systems and production of small metallic items.

### 2) PERFORATED SECTIONS

Thin-walled sections up to 3 mm thick are also available in a perforated form. The cross-sections are based on the standard U, L and C sections, or on specific customer requirements.

### 3) SPECIAL SECTIONS

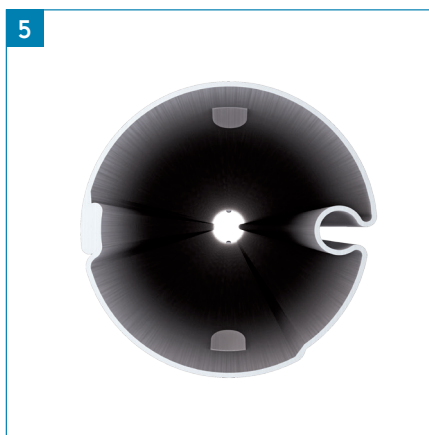
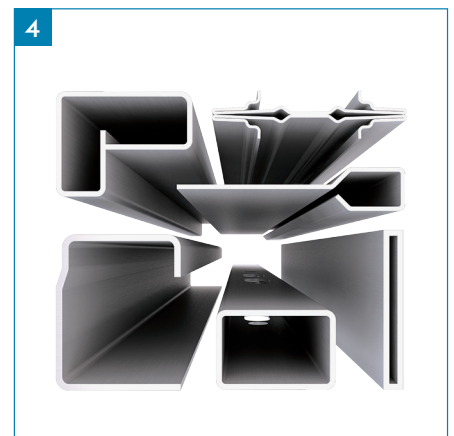
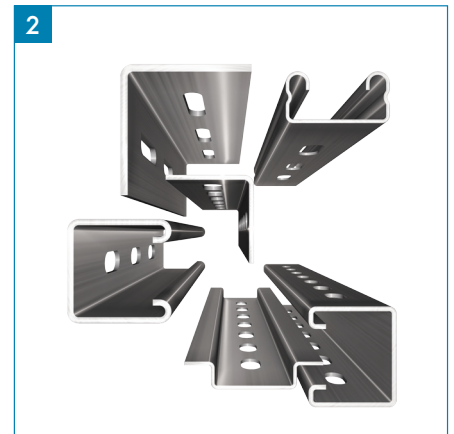
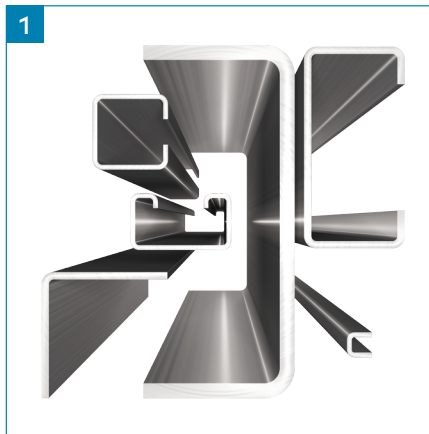
This group includes various types of door frame section, sections for constructions of sliding and hinged gates, special sections for HVAC systems and many others. This portfolio of special sections is constantly growing with the increasing emphasis on product innovation across all industries.

### 4) STIFFENERS FOR PLASTIC WINDOWS

Galvanised sections for reinforcing frames, wings and columns of PVC windows and doors. We offer a wide variety of stiffeners for numerous window systems ranging from basic window reinforcements, through welded and milled door reinforcements to special riveted joints and fasteners.

### 5) ROLLER TUBES

Special slit tubes used as shafts for luggage compartments roller blinds in estate cars, SUVs and MPVs.



**voestalpine Profilform s.r.o.**

Tovární 4, CZ-682 23 Vyškov, Czech Republic

Phone +420 517 340 808

E-mail: [purlins.cz@voestalpine.com](mailto:purlins.cz@voestalpine.com)

[www.voestalpine.com/profilform-cz](http://www.voestalpine.com/profilform-cz)

**voestalpine**

ONE STEP AHEAD.