



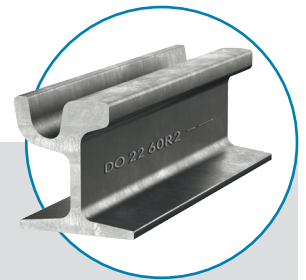
TRAM 290GHT-CL

Description

The rail steel 290GHT-CL is a pearlitic, heat treated rail grade with a minimum hardness of 280 HB. The special material concept with a carbon content of less than 0.5% allows easiest gauge corner repair welding.

Area of Application

This rail steel grade is recommended for the use in tight curves for customers who want to follow an "easy to maintain" strategy.



Your Benefits

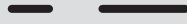
- » material concept is designed for easiest gauge corner repair welding
- » increased service life due to HSH[®] heat treatment

TECHNICAL CHARACTERISTICS

Rail Steel Grade 290GHT-CL

This data sheet applies to rail steel grade 290GHT-CL produced by voestalpine Rail Technology GmbH, 8700 Leoben-Donawitz, Austria – based on EN14811:2019.

Steel Grade Description

Steel Grade	Surface Hardness [BHN]	Description of Steel Design	Field of Application	Branding
290GHT-CL	280-320	<ul style="list-style-type: none"> » Non Alloy (C-Mn) » Extra low carbon content » Heat treated – HSH® Technology 	<ul style="list-style-type: none"> » Primarily in curves of tramway tracks » Build-up welding without pre-heating* 	

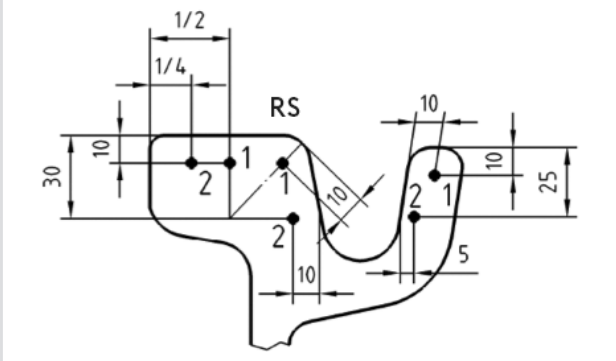
*Detailed welding recommendations can be requested directly from product management.

Chemical Composition

C [%]	Si [%]	Mn [%]	Cr [%]	P [%]	S [%]	H [ppm]
0.40-0.50**	0.15-0.58	0.70-1.10	max. 0.15	max. 0.025	max. 0.025	max. 2.5

**Extra low carbon content for best weldability (build-up welding)

Hardness

	Position	Hardness [BHN]
	RS	280-320
	1	> 280
	2	> 270
	3	-
	4	-

Tensile Testing

Tensile Strength [MPa]	Elongation [%]
≥ 960	≥ 11

Thank you very much for your interest.
 We are happy to answer your questions under
product_management@voestalpine.com
 Also your local contact person is looking forward to support you.