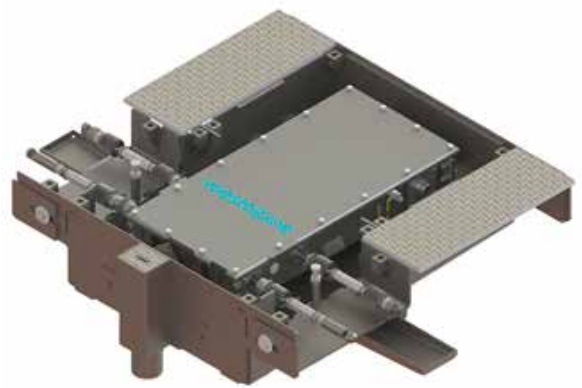


# EARTH BOX

## For Point Machines for Grooved Rail Turnouts

### Description

The voestalpine Signaling earth boxes were specially developed for the protection of the UNISTAR CSV 24 and UNISTAR CSV 34 point machines in the grooved rail area. Special designs on customer request are possible.



### System advantages

- » hot-dip galvanized standard version
- » high stability
- » suitable for tracks from 900 mm
- » standard cable entry of Ø 70 mm

## Options

- » for load class D400
- » Insulation:
  - » Stray current insulation
    - two component injection elastomer
    - strong adhesion
    - impact and scratch resistant
    - resistant to 5KV surge voltage
  - » Rail-to-rail insulation
- » water pan
- » deep version
- » installation next to the track
- » cover for lever recess
- » detection
- » position, direction and diameter of the water pipe freely selectable, adapted to the gradient

## System Features

- » hot-dip galvanized standard version
- » high stability
- » suitable for tracks from 900 mm
- » standard cable entry of Ø 70 mm

