



# R290GHT

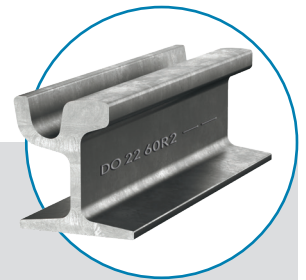
## Standard steel grade for curves on tram track

### Description

The rail steel R290GHT according to EN 14811:2019 is a pearlitic, heat treated rail grade with a minimum hardness of 290 HB. This steel grade offers the perfect balance between wear resistance and gauge corner repair weldability.

### Area of Application

This rail steel grade is recommended in curves for customers following an "easy to maintain" strategy.



### Your Benefits

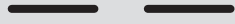
- » material concept is designed for easiest gauge corner repair welding
- » increased service life due to HSH® heat treatment

# TECHNICAL CHARACTERISTICS

## Rail Steel Grade R290GHT

This data sheet applies to rails produced by voestalpine Rail Technology GmbH, 8700 Leoben-Donawitz, Austria – according to state of the art rail production technology and according to the international standards EN14811:2019.

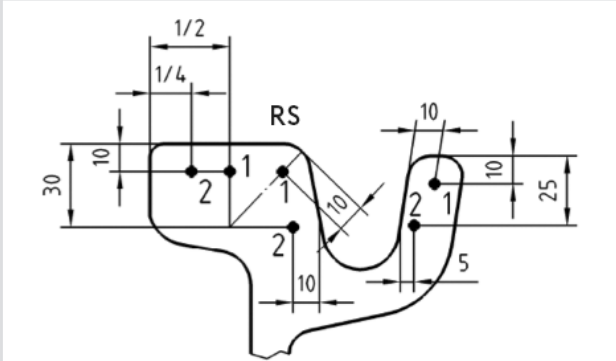
## Steel Grade Description

Steel Grade	Surface Hardness [BHN]	Description of Steel Design	Field of Application	Branding
R290GHT	290-330	<ul style="list-style-type: none"> <li>» Non Alloy (C-Mn)</li> <li>» Extra low carbon content</li> <li>» Heat treated – HSH® Technology</li> </ul>	<ul style="list-style-type: none"> <li>» Primarily in curves of tramway tracks</li> <li>» Build-up welding without pre-heating</li> </ul>	

## Chemical Composition

C [%]	Si [%]	Mn [%]	Cr [%]	P [%]	S [%]	H [ppm]
0.50-0.55	0.15-0.58	1.00-1.25	max. 0.15	max. 0.025	max. 0.025	max. 2.5

## Hardness

	Position	Hardness [BHN]
	RS	290-330
	1	> 290
	2	> 270
	3	-
	4	-

## Tensile Testing

Tensile Strength [MPa]	Elongation [%]
≥ 960	≥ 11

Thank you very much for your interest.  
 We are happy to answer your questions under  
[product\\_management@voestalpine.com](mailto:product_management@voestalpine.com)  
 Also your local contact person is looking forward to support you.