

THE LIFE CYCLE OF A TURNOUT

COMPLETE SOLUTIONS IN TURNOUT LOGISTICS

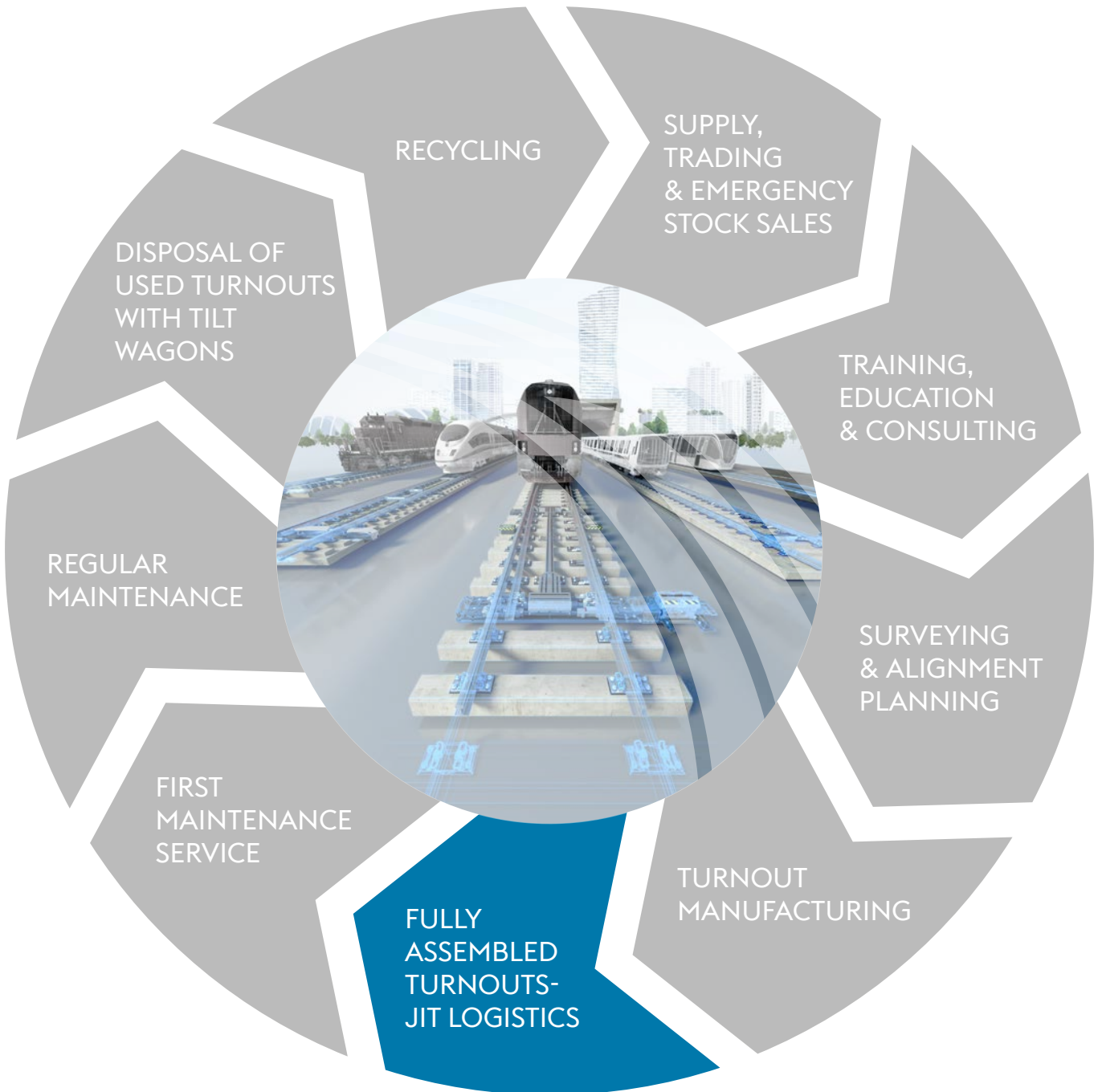
For your Performance on Track®.

DEVELOPED FOR YOUR BENEFIT – FULL SERVICE SOLUTIONS FOR THE TURNOUT LIFE CYCLE

As a complete provider of turnout solutions, voestalpine Turnout Technology Zeltweg covers the entire product life cycle of a turnout. Only a company with experience in the whole duration of the life cycle of turnouts and turnout components can professionally evaluate and optimize specific product characteristics, and develop designs to sustainably extend the life of a turnout.

In addition to the manufacturing of turnouts, our range of services includes technical services, logistics and disposal of used turnouts with tilt wagons. Our comprehensive maintenance service through techniques that extend the life of the turnouts, such as installation monitoring, first maintenance service and turnout service, complete our offer. This provides our customers with of the highest installation quality and cost-effectiveness, as well as

higher track availability due to shorter route closures. For us, offering complete solutions means understanding the needs of our customers and developing customized system solutions with added value in order to implement innovative designs together with our customers, for greater efficiency and cost-effectiveness, and to head down new paths together.





“JUST IN TIME” (JIT) –
BECAUSE TIME MAKES THE DIFFERENCE

EUROPE'S MARKET LEADER IN TURNOUT LOGISTICS

WS Logistik offers complete logistical handling, delivering pre-assembled turnouts on specialised tilt wagons through its extensive transport fleet for turnouts (WTW, WTM = turnout transport wagon fleet). The integration of all safety related components takes place in our plant, which considerably increases the overall quality of the installation. The reliability and availability of the turnouts and crossings are integral to ensuring the efficiency of the track.

More quality

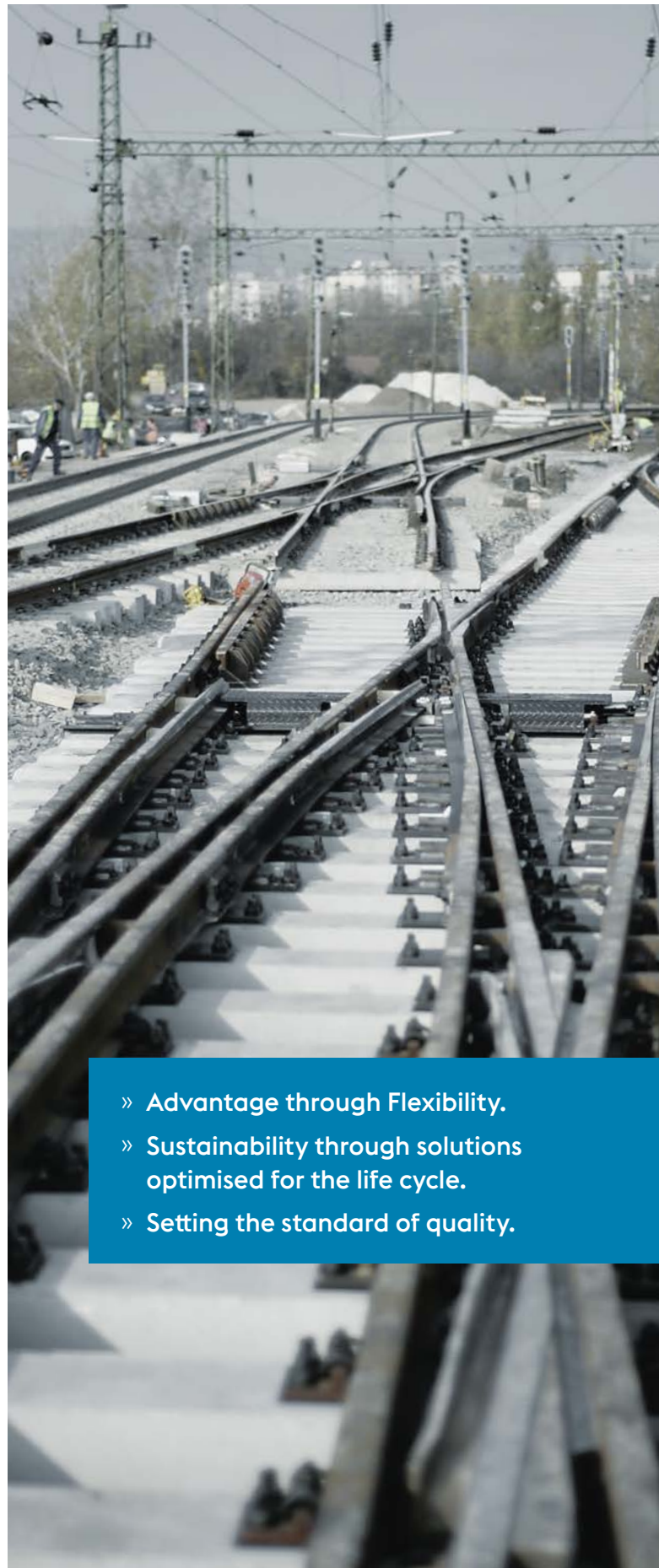
Only through development can we offer our customers the best quality. Achieving the highest reliability and availability while ensuring maximum safety and efficiency is the top priority for all our solutions. Quality arises from an outstanding cooperation of everyone involved in the logistics chain: from the technical testing to the transport logistics all the way through to loading/unloading and disposing of old turnouts. This is how we develop practical applications with maximum customer benefits and innovative concepts of the highest technological level.

More international

Our international presence allows us to utilise synergies for our customers and to implement customer-oriented solutions within the shortest possible timeframe. Transport routes are optimised and response times are shortened. Block trains deliver pre-assembled turnouts “just in time” to your particular installation flexibility. In addition to numerous projects in Austria, our block trains also deliver to construction sites in Germany, Hungary, Poland, Switzerland and the Netherlands, which highlights the international nature of WS Logistik.

More customer benefits

WS Logistik is characterised by reliable and prompt deliveries, flexibility and excellent quality. Our competence centre for turnout logistics supports our customers in dramatically reducing life cycle costs as well as increasing quality thanks to the pre-assembled turnouts produced in our plants. “Just in time” allows our customers to name the time and place of the delivery of their requested systems.



- » Advantage through Flexibility.
- » Sustainability through solutions optimised for the life cycle.
- » Setting the standard of quality.



PERFORMANCE ON TRACK®

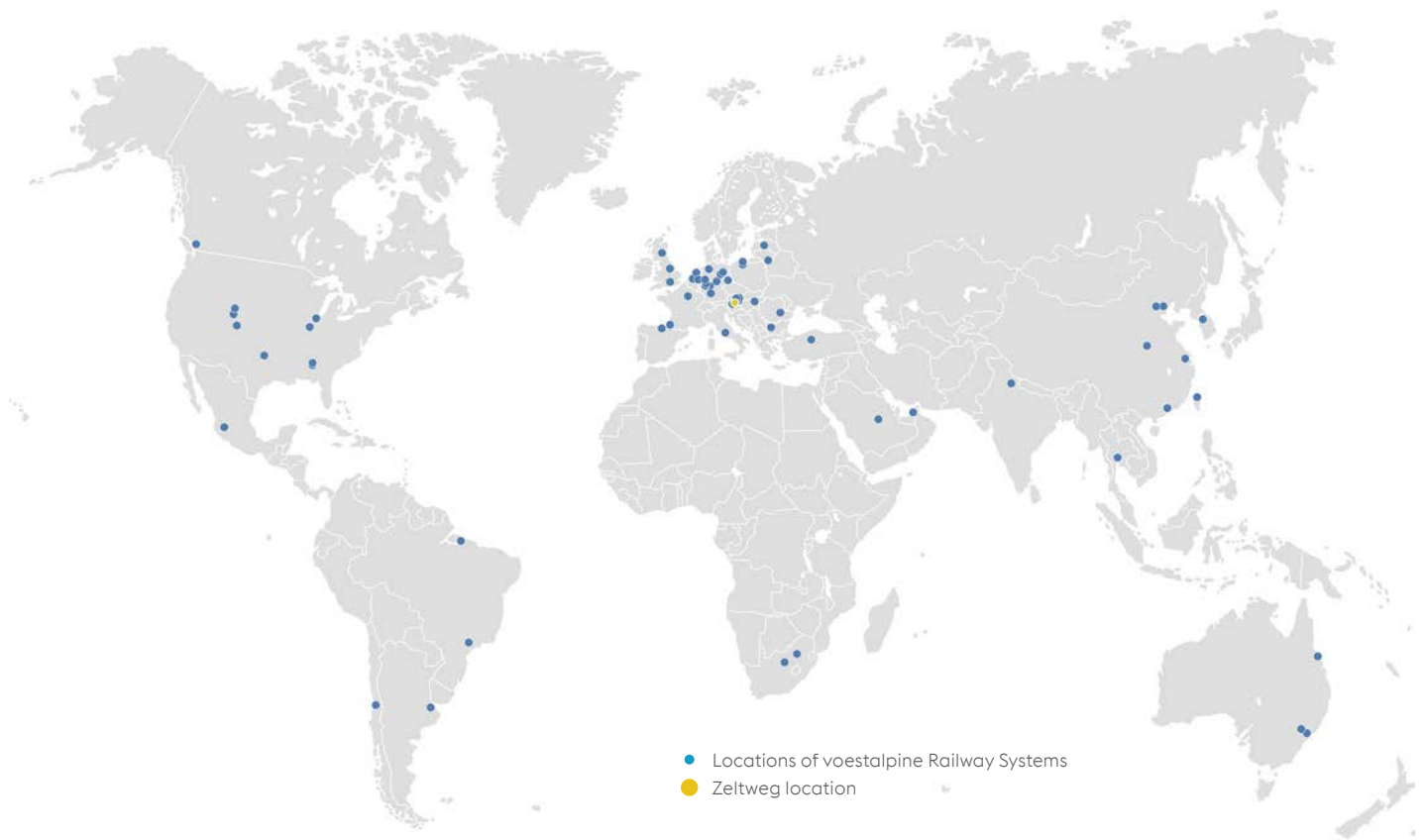
voestalpine Railway Systems

We are a world leader in system solutions for railway infrastructure, and we offer high quality products and services (Track Solutions) for rail, turnouts, fastening systems and signaling technology.

WE ARE PERFORMANCE ON TRACK®.

voestalpine Turnout Technology Zeltweg, a subsidiary of voestalpine Railway Systems, is a leading system partner in the turnout sector. The company develops and produces Vignole turnouts, track connections, slips, crossings and complete layouts, etc. in accordance with international standards or special customer requirements, in all available rail profiles and required gauges. Innovative drive,

locking & monitoring units, diagnostic systems for fixed installations and rolling stock as well as a diverse range of services complete the product portfolio. Notable references in high-speed, heavy-duty and local transport sectors all over the world emphasize the extensive competence of our company.



voestalpine Turnout Technology Zeltweg GmbH

Alpinestraße 1

8740 Zeltweg, Austria

T. +43/50304/28-0

F. +43/50304/68-129

www.voestalpine.com/railway-systems

voestalpine

ONE STEP AHEAD.