



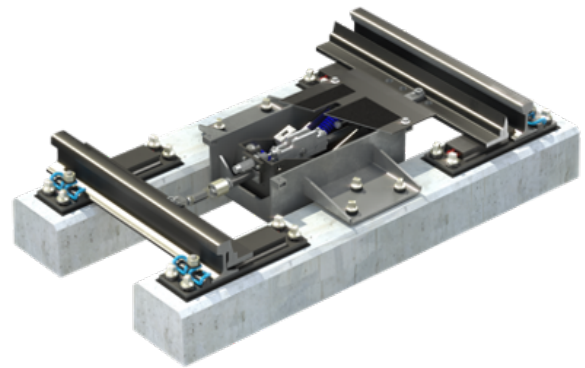
UNISTAR CSV 34

Manuel Point Machine

Description

Even for the basic version with its proven performance in more than 3000 installations only high grade corrosion-free materials are utilized. The voestalpine SIGNALING stainless steel concept is also applied.

To further increase availability and decrease maintenance expenses at the same time, a watertight version of UNISTAR CSV 34 is available. The developers used the existing know-how, gathered with the electric point machine UNISTAR CSV 24.



System advantages

- » Flexibly usable for all track gauges
- » Well proven product concept with lowest maintenance efforts
- » All functionally relevant parts made of inductive hardened special steel
- » Frame and housing made of non-corroding stainless steel
- » Durable hot dip galvanized steel earth box
- » In its watertight version, all mechanical units are permanently protected against dirt and salt
- » Maintenance-free bearings
- » Turning frame for mode change 'reversing' – 'non-reversing', no additional parts needed
- » Adjustment performed in less than 5 minutes
- » Trailable
- » Earth box designed for 12 t axle load (as an option up to 50 t, fulfilling load classes D400 and E600 standards)
- » Holding force up to 2 400 N, adjustable for each side separately
- » Throw 80 mm or 120 mm, self-adjusting



FEATURES UNISTAR CSV 34

Additional description

The well proven setting rod brushing and the vulcanized-on cover seal ensure that the UNISTAR CSV 34 remains permanently watertight according to IP67.

This results in considerable maintenance advantages and thus significant cost savings, as the setting mechanism, springs and dampers are fully protected against environmental impacts like sand, dirt, snow and melt water. Furthermore, end position contacts in case of detector rods are also perfectly protected.

UNISTAR CSV 34 is applicable for all track gauges. The device can be installed either within the gauge (as from 900 mm), or beside the tracks. Setting of the turnout direction is performed manually via the lever recess, acting

directly onto the mechanical unit, or by the trailing operation of a vehicle, passing in trailing direction.

Due to its compact design it is also possible to retrofit into existing earth boxes. Simple change of operating mode between 'reversing' and 'non-reversing' is performed by turning one component only. The maximum throw equals 80 mm or 120 mm respectively.

All modules of the UNISTAR CSV 34 are both, easily accessible and easily adjustable. Its self-explaining structure reduces training requirements to a minimum. Particularly striking features are its two separate adjustable dampers and coil springs. Therefore, it is guaranteed to react on different conditions of both setting directions.

Technical Data

Item	Value
Track gauge	min. 900 mm in case of centered installation
Throw	up to 120 mm, adjustable without changing parts
Holding force	up to 2800 N – adjustable
Protection class	up to IP 67
Dampers	separately adjustable in 1 - 9 levels
End position monitoring	by means of proximity or mechanical contacts (optional)